

AKU & KAMU[®]

Alphabet Letters

These worksheets are a great quick-to-go activity, fast to print and use.

There are 26 worksheets to practice upper and lowercase letters from A-Z.



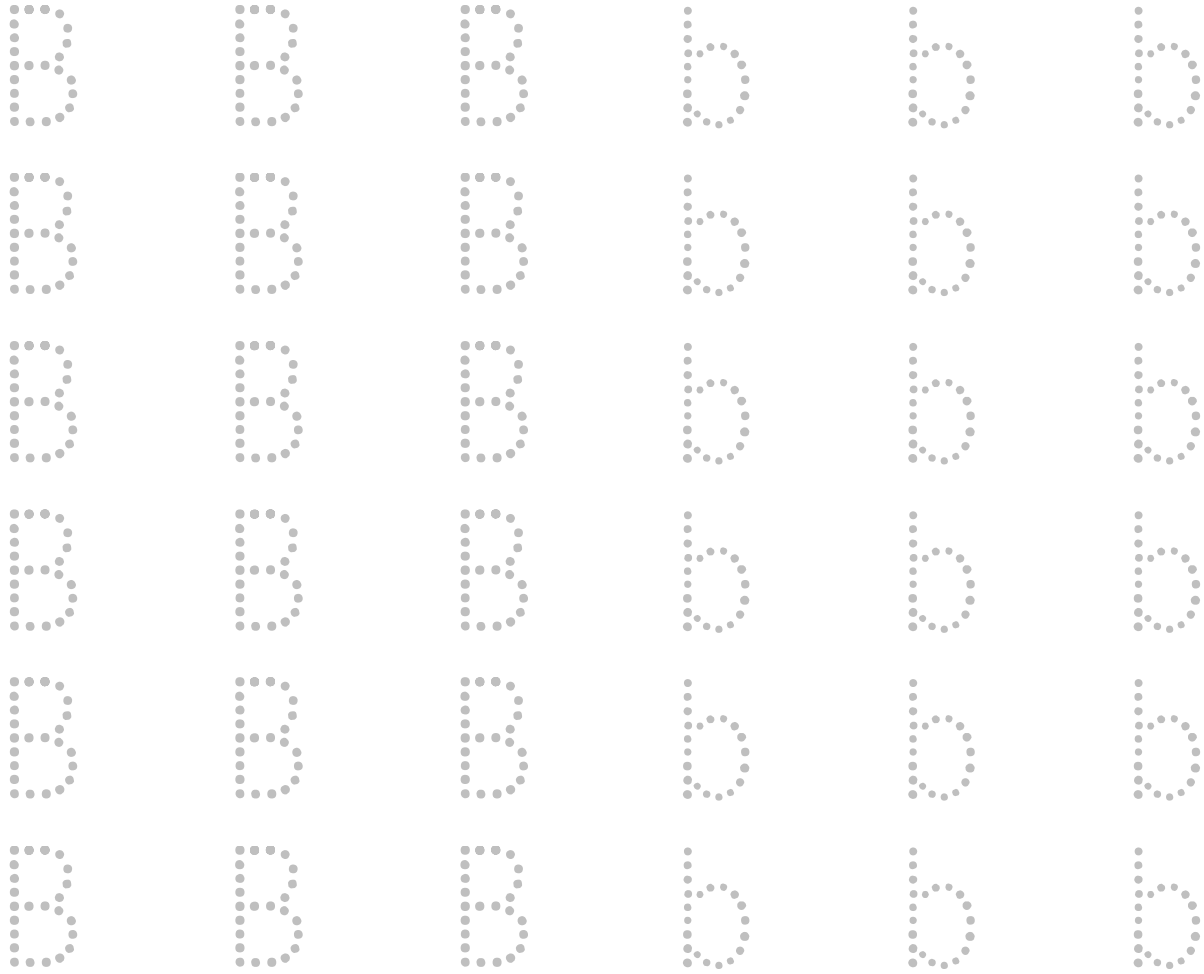
ALPHABET LETTERS



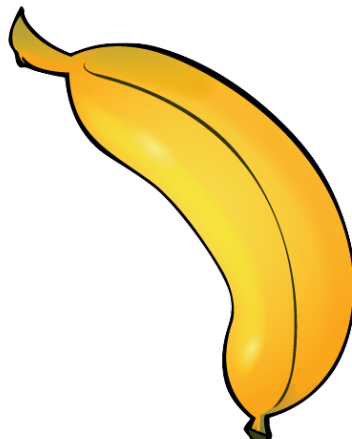
A is for ___pple



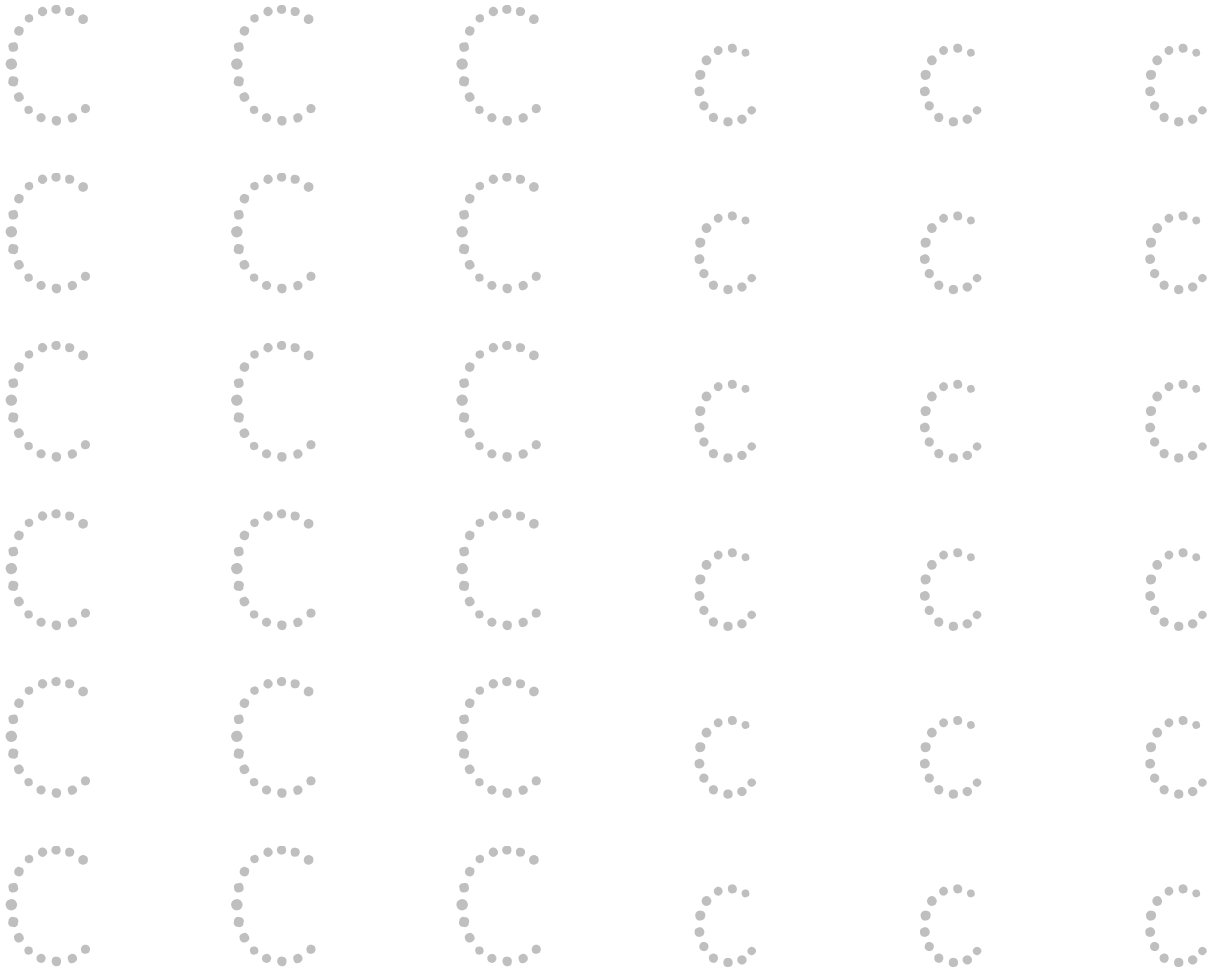
ALPHABET LETTERS



B is for ___ anana



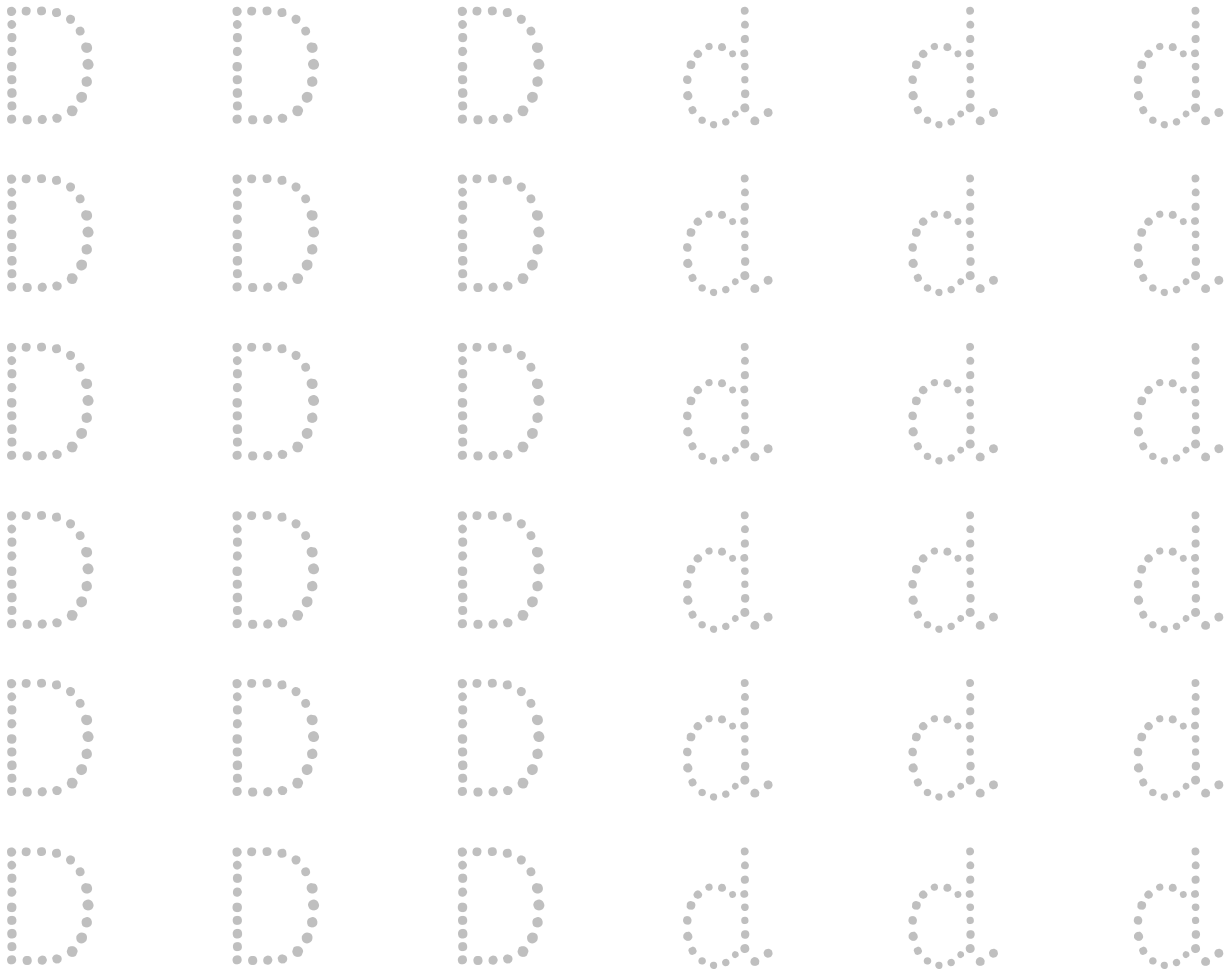
ALPHABET LETTERS



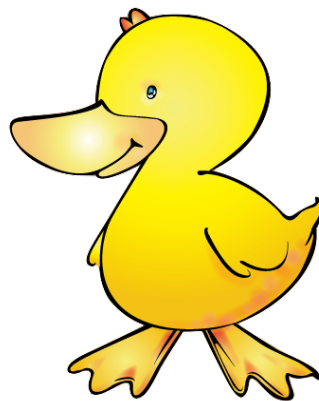
C is for ___ lock



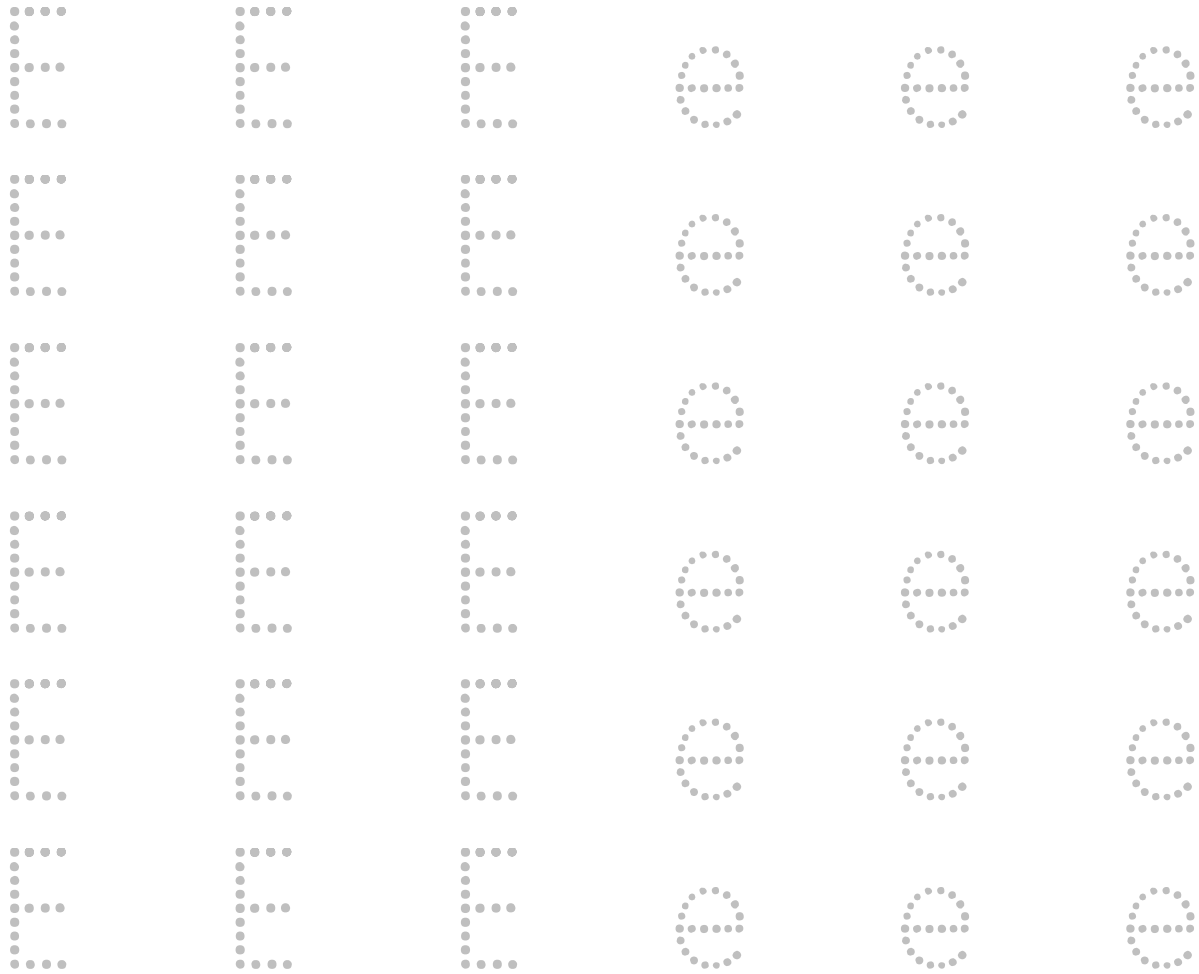
ALPHABET LETTERS



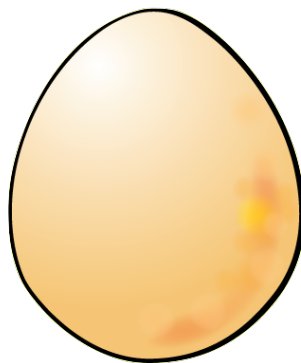
D is for uck



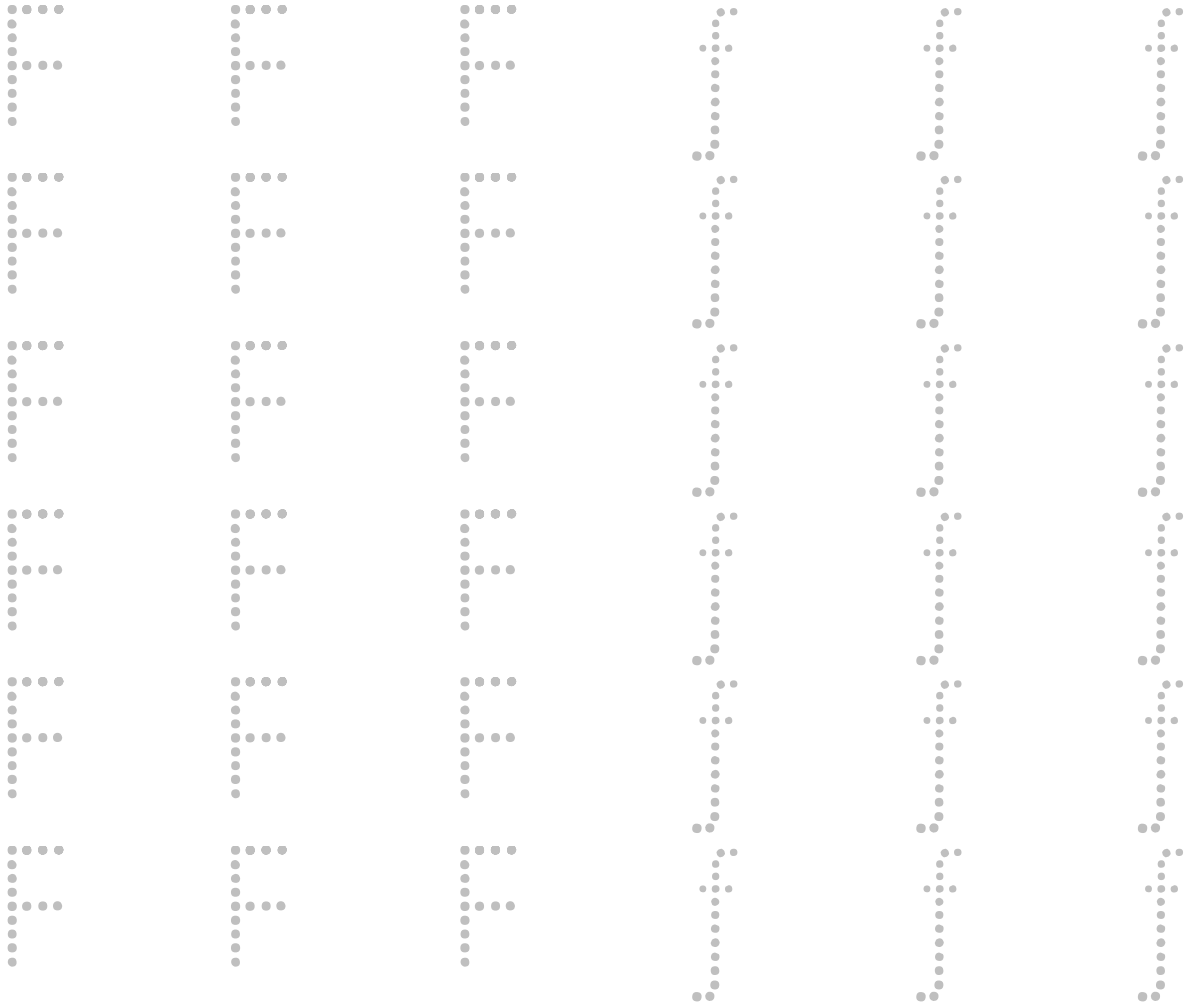
ALPHABET LETTERS



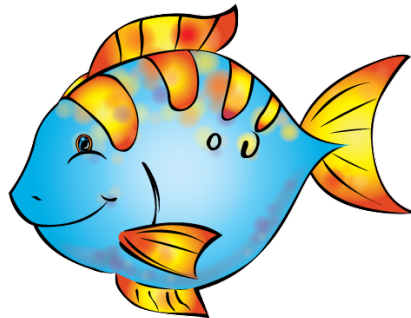
E is for ___gg



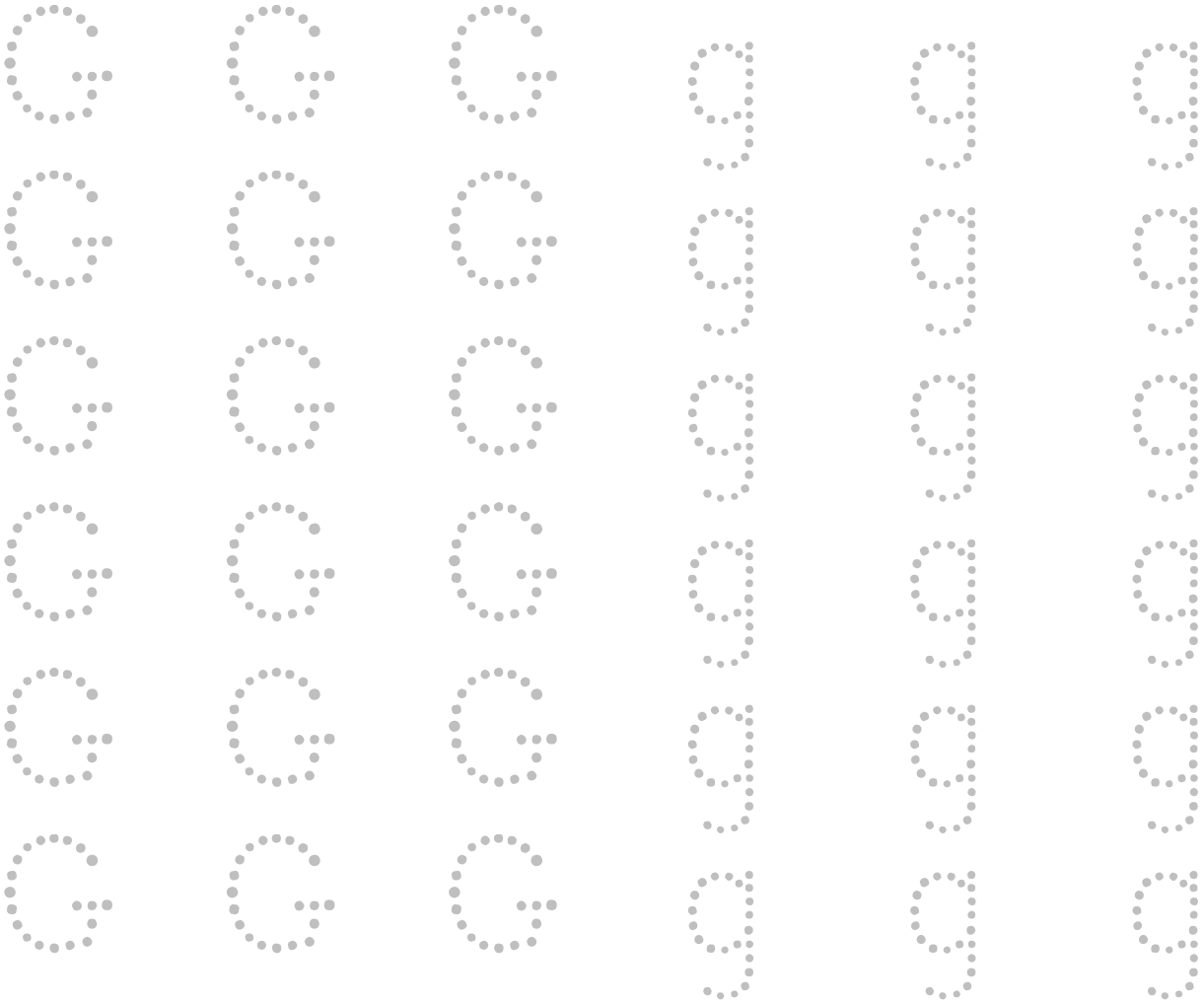
ALPHABET LETTERS



F is for ___ish



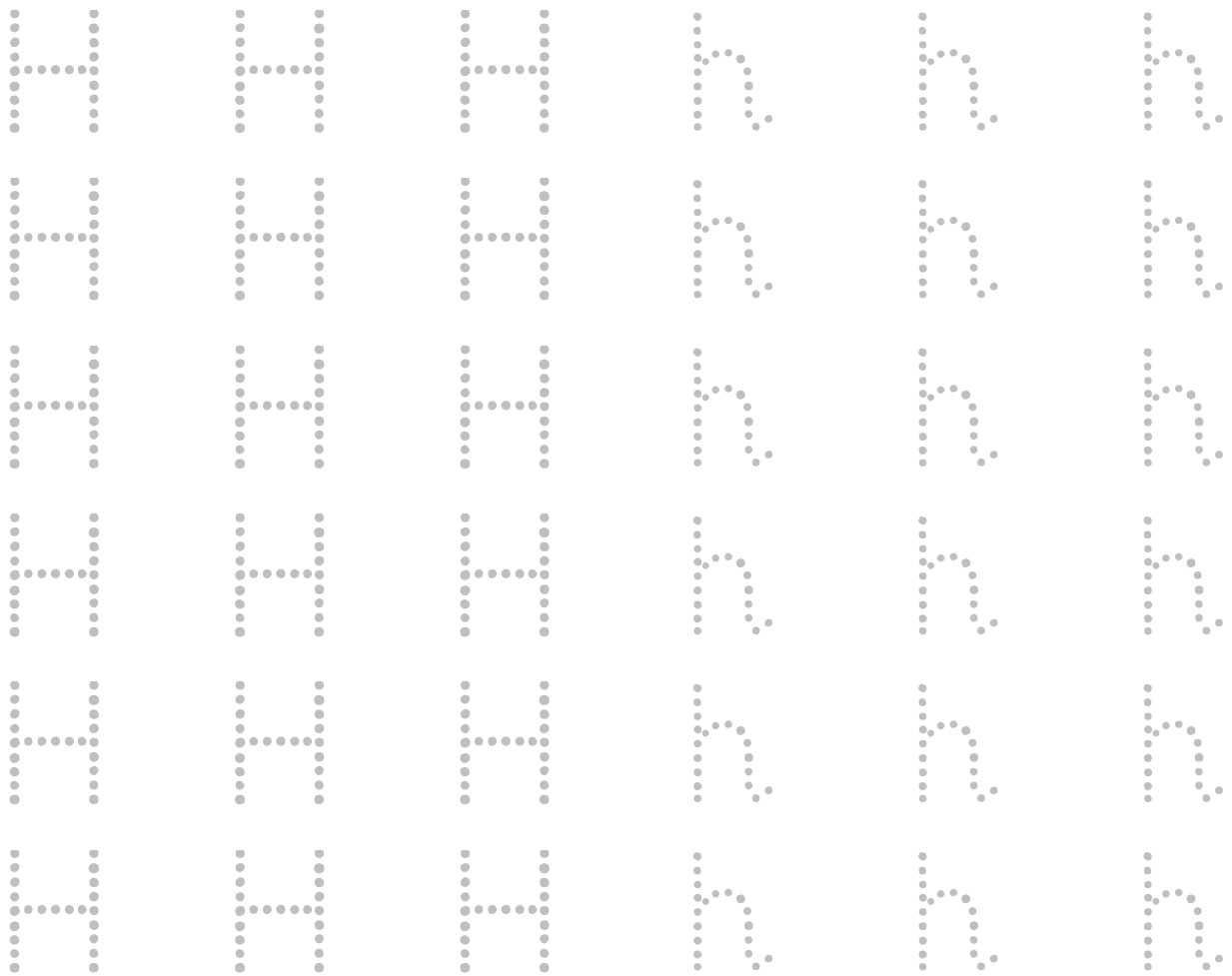
ALPHABET LETTERS



G is for ___ oat



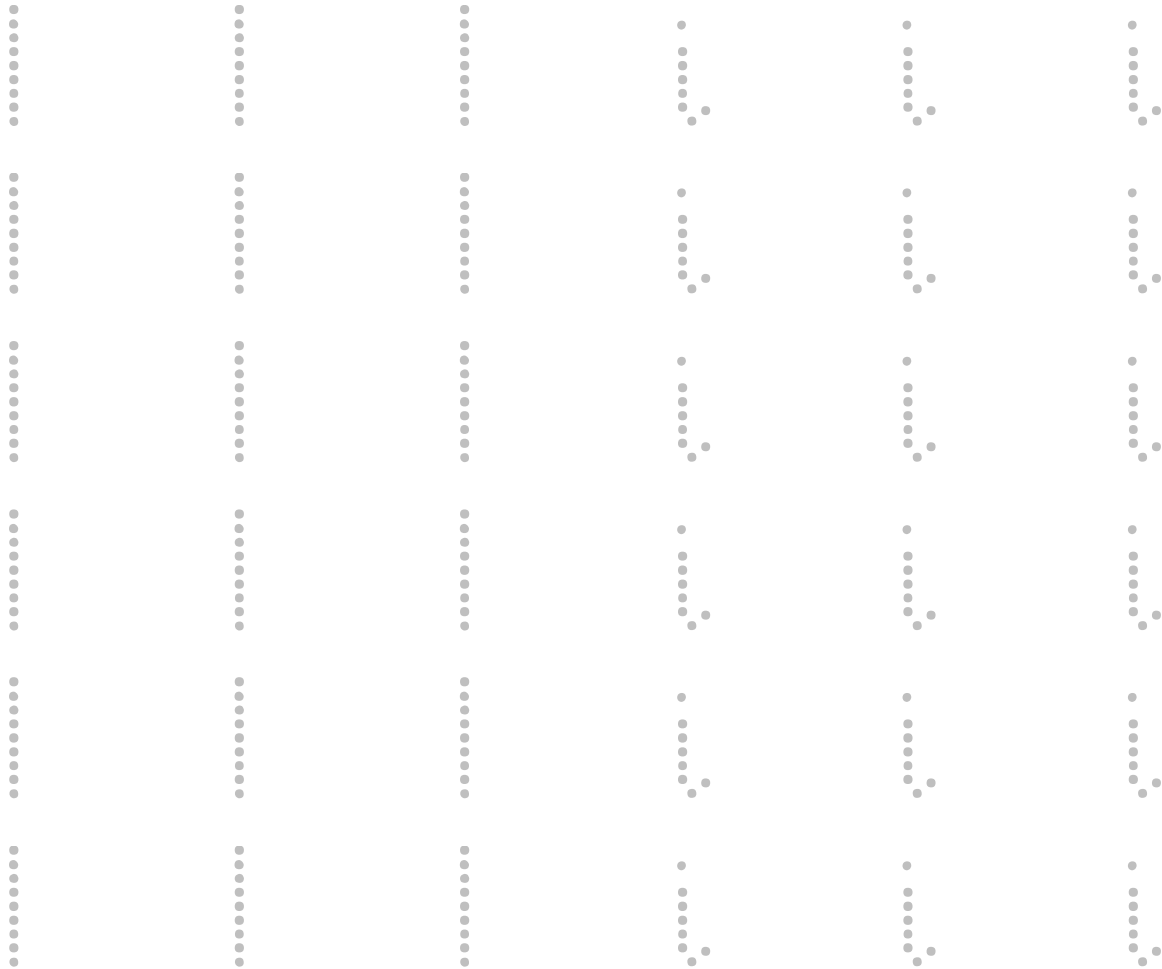
ALPHABET LETTERS



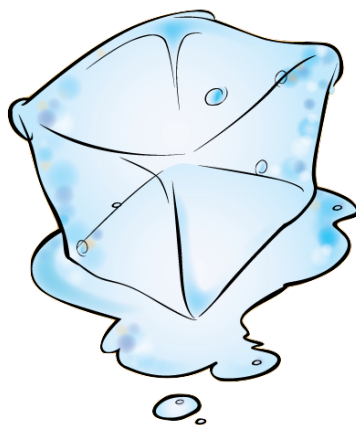
H is for eart



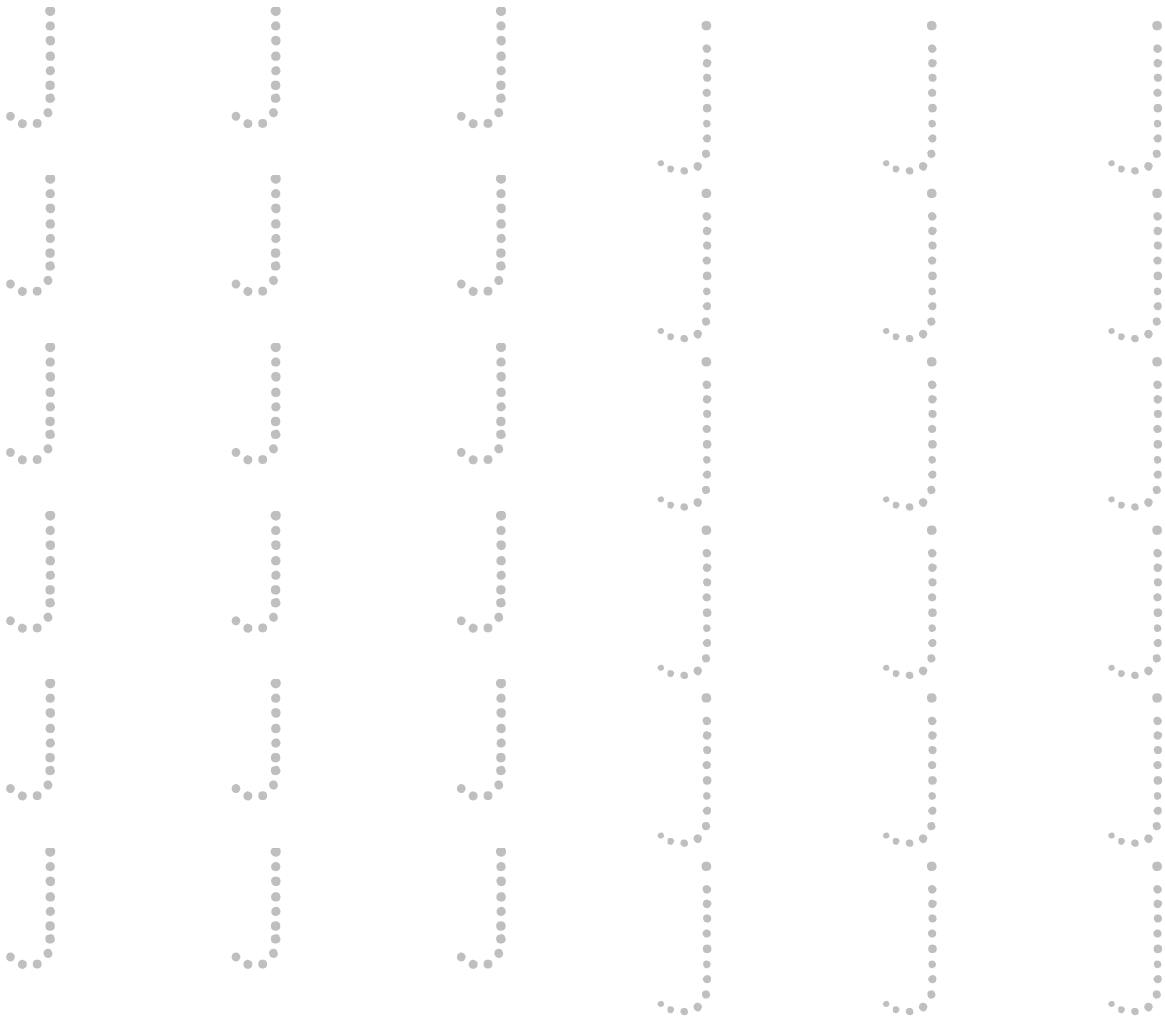
ALPHABET LETTERS



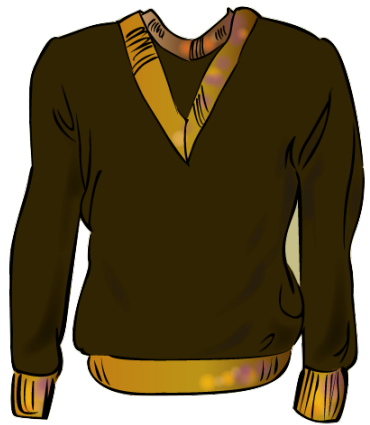
I is for _____ ce



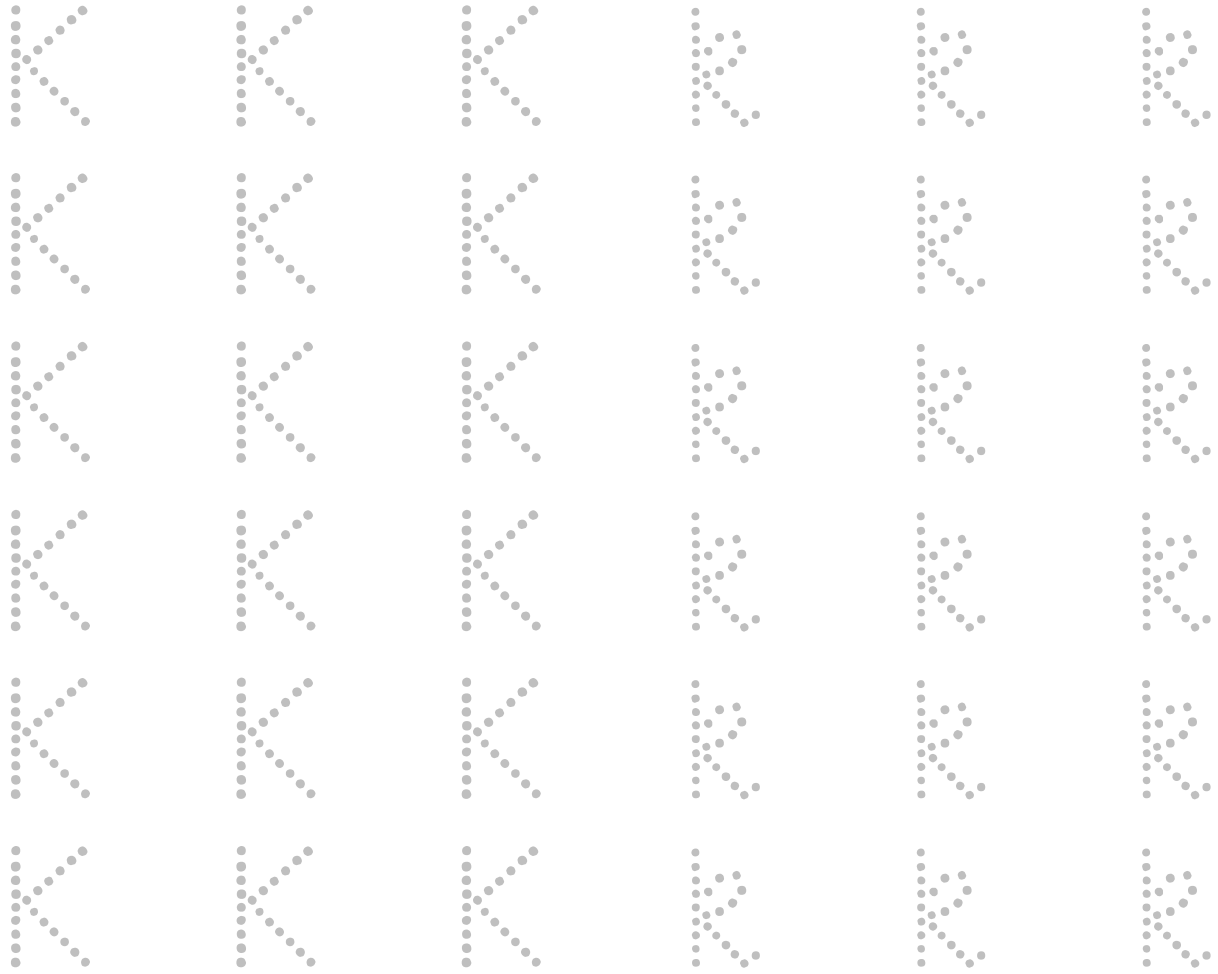
ALPHABET LETTERS



J is for _____umper



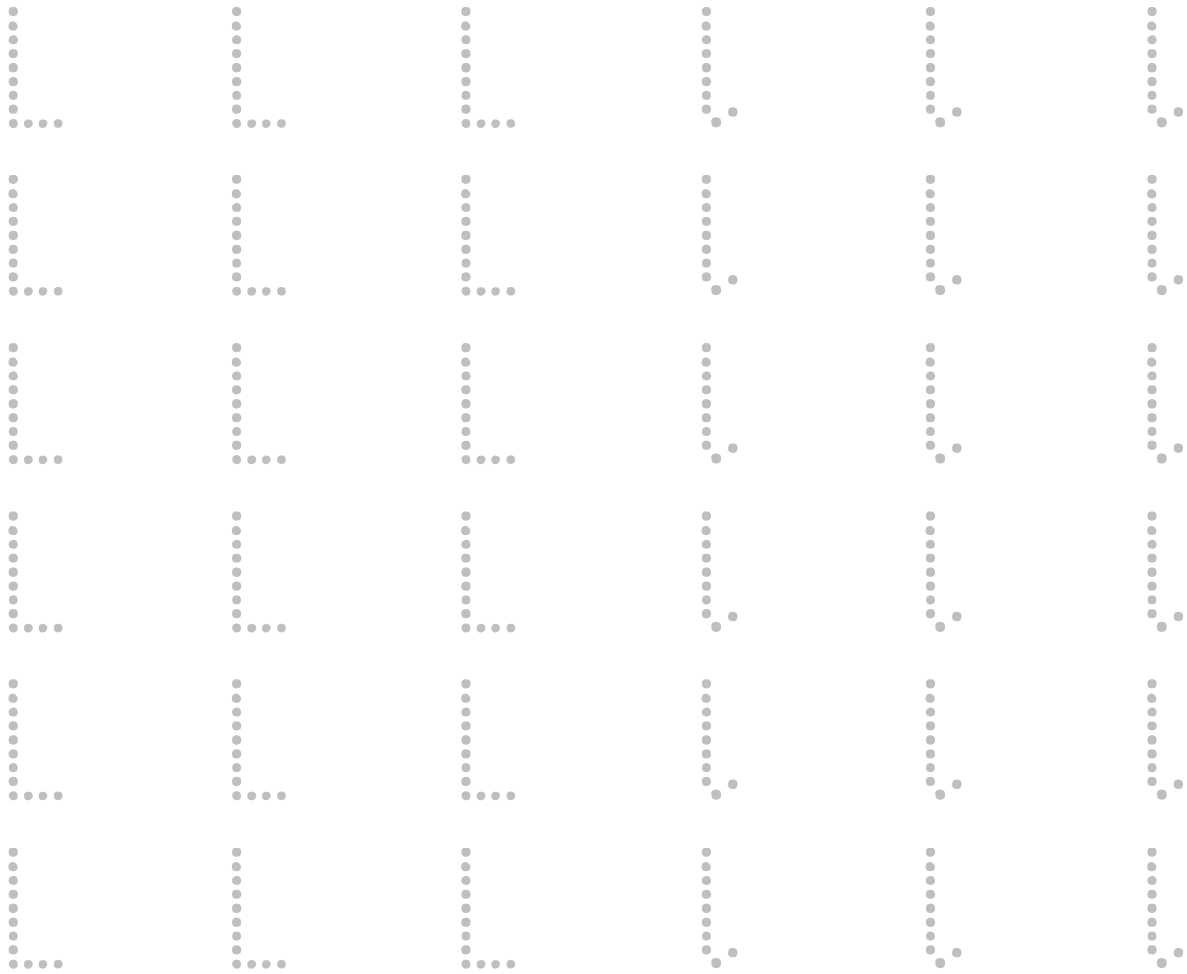
ALPHABET LETTERS



K is for ___ oala



ALPHABET LETTERS



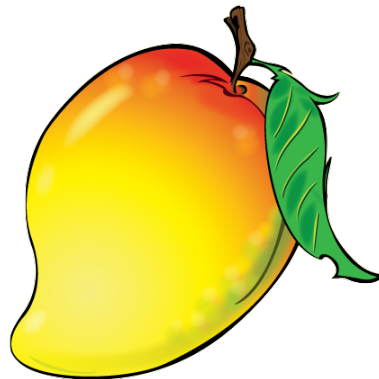
L is for ion



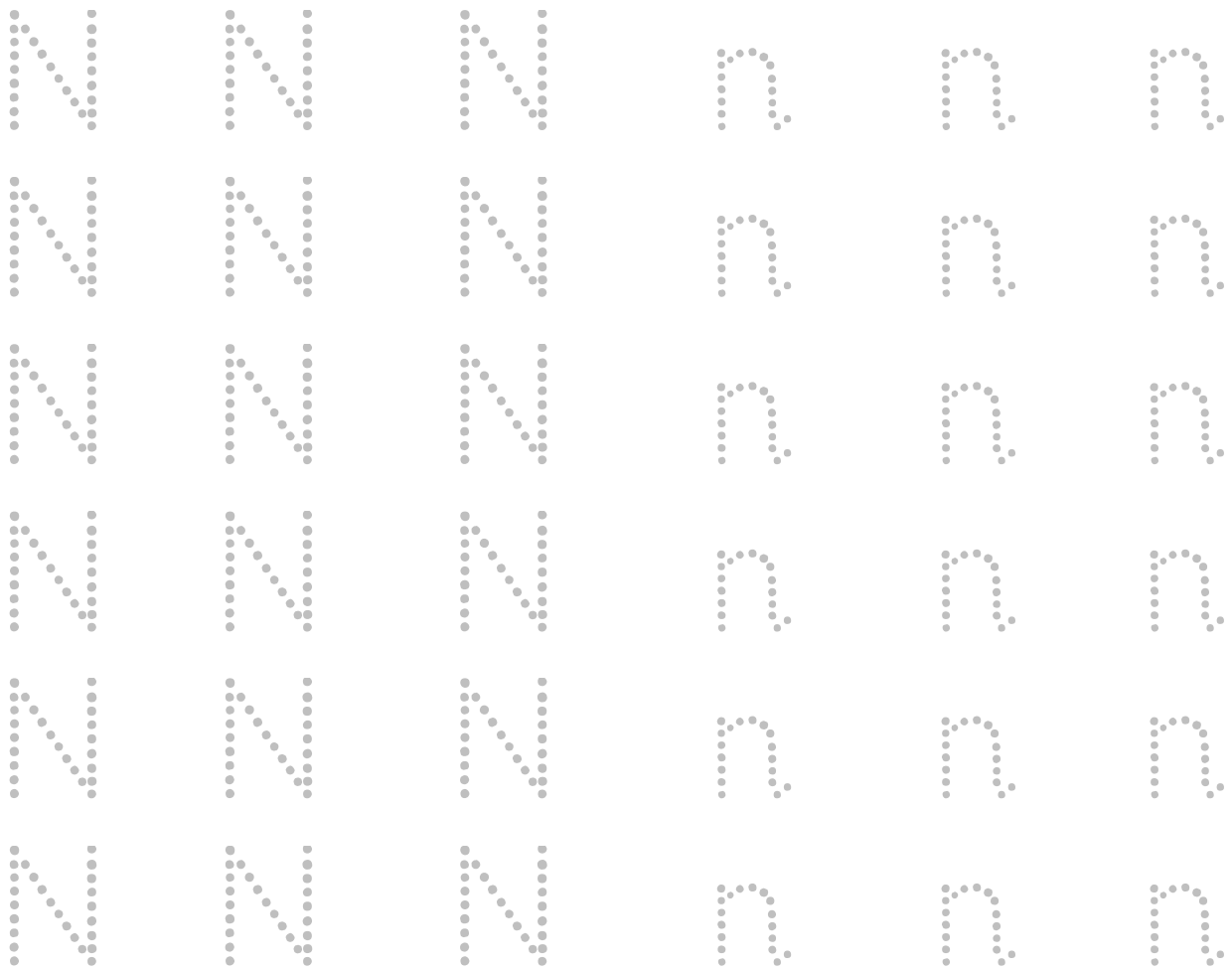
ALPHABET LETTERS



M is for ango



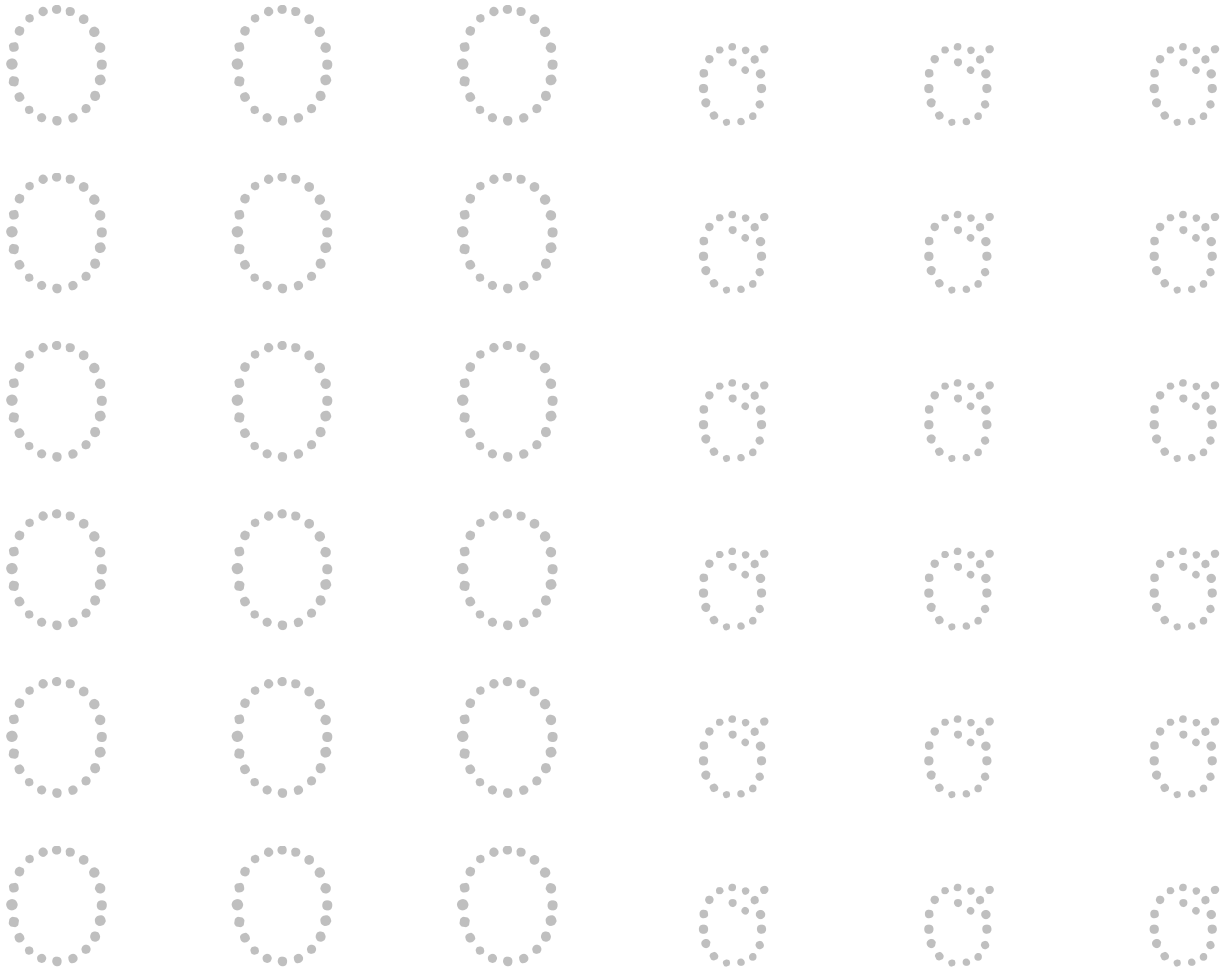
ALPHABET LETTERS



N is for ___ uts



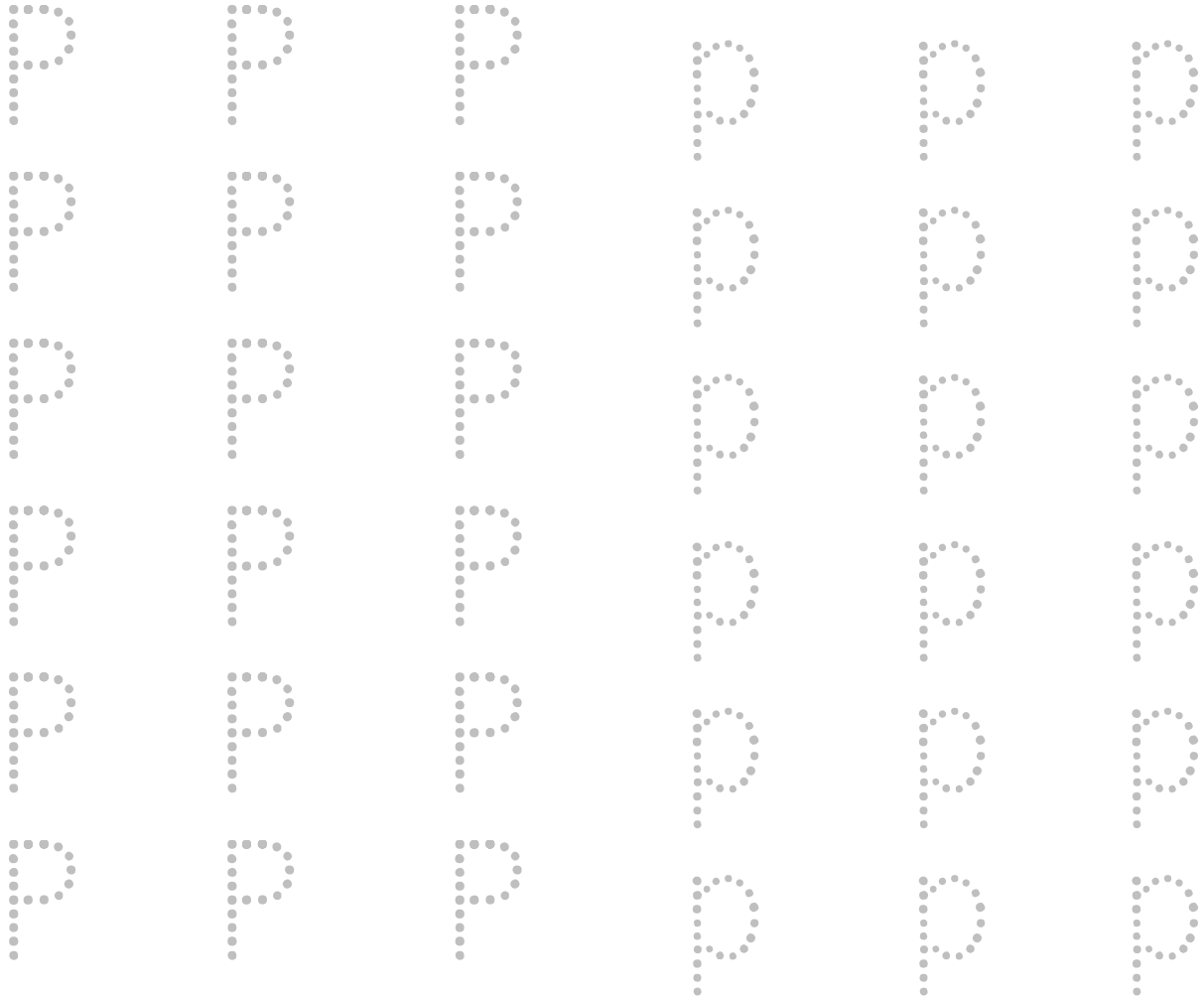
ALPHABET LETTERS



O is for ___ wI



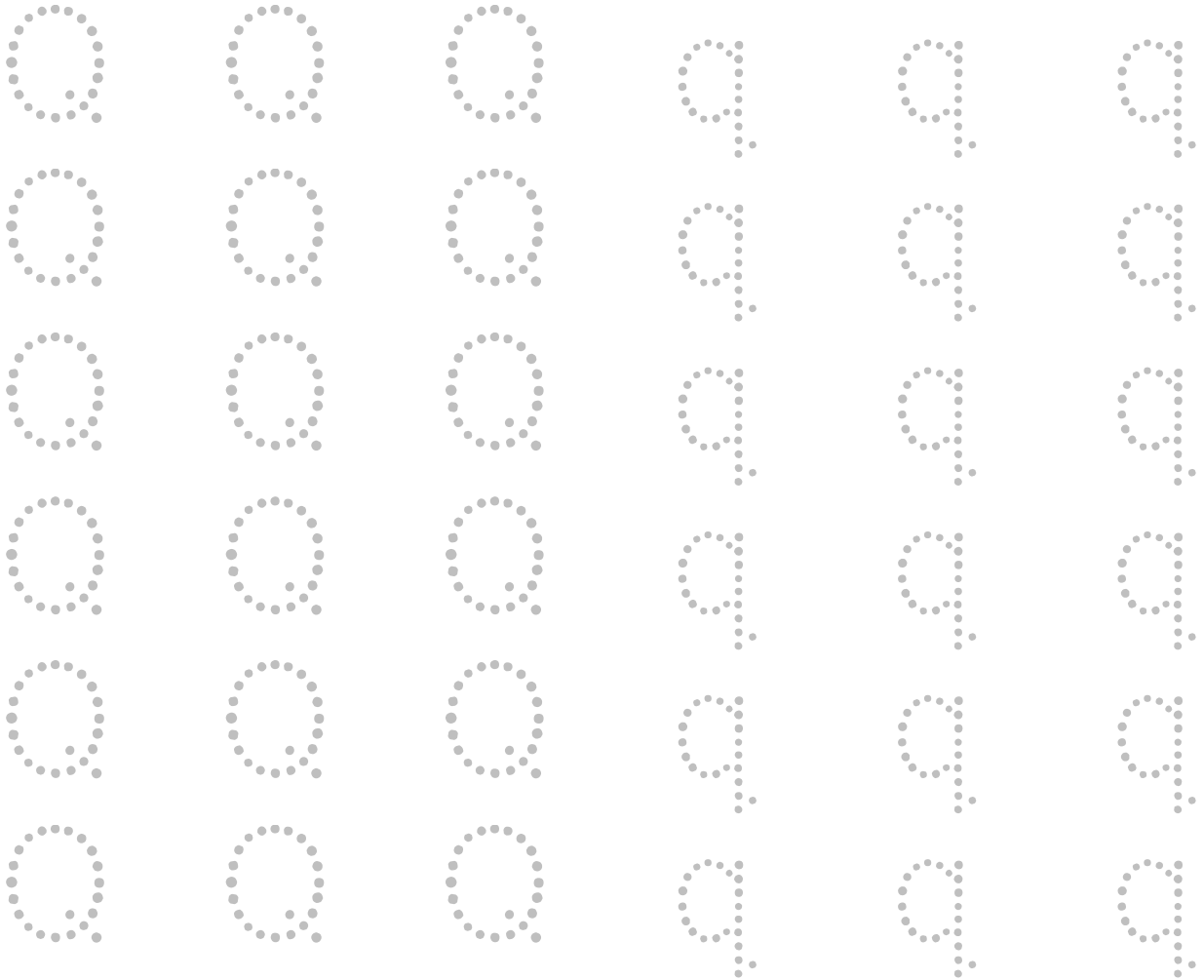
ALPHABET LETTERS



P is for Polar Bear



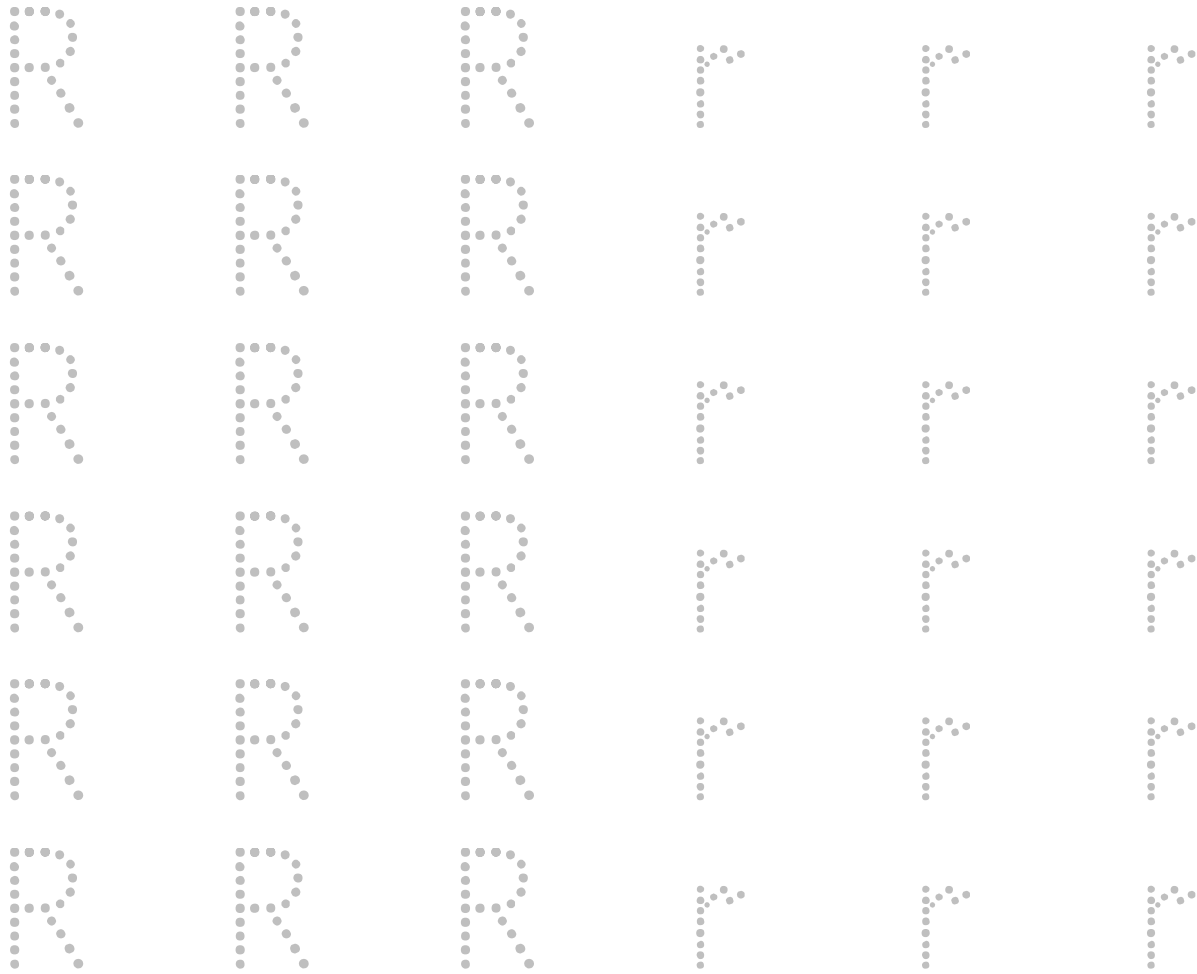
ALPHABET LETTERS



Q is for ueen



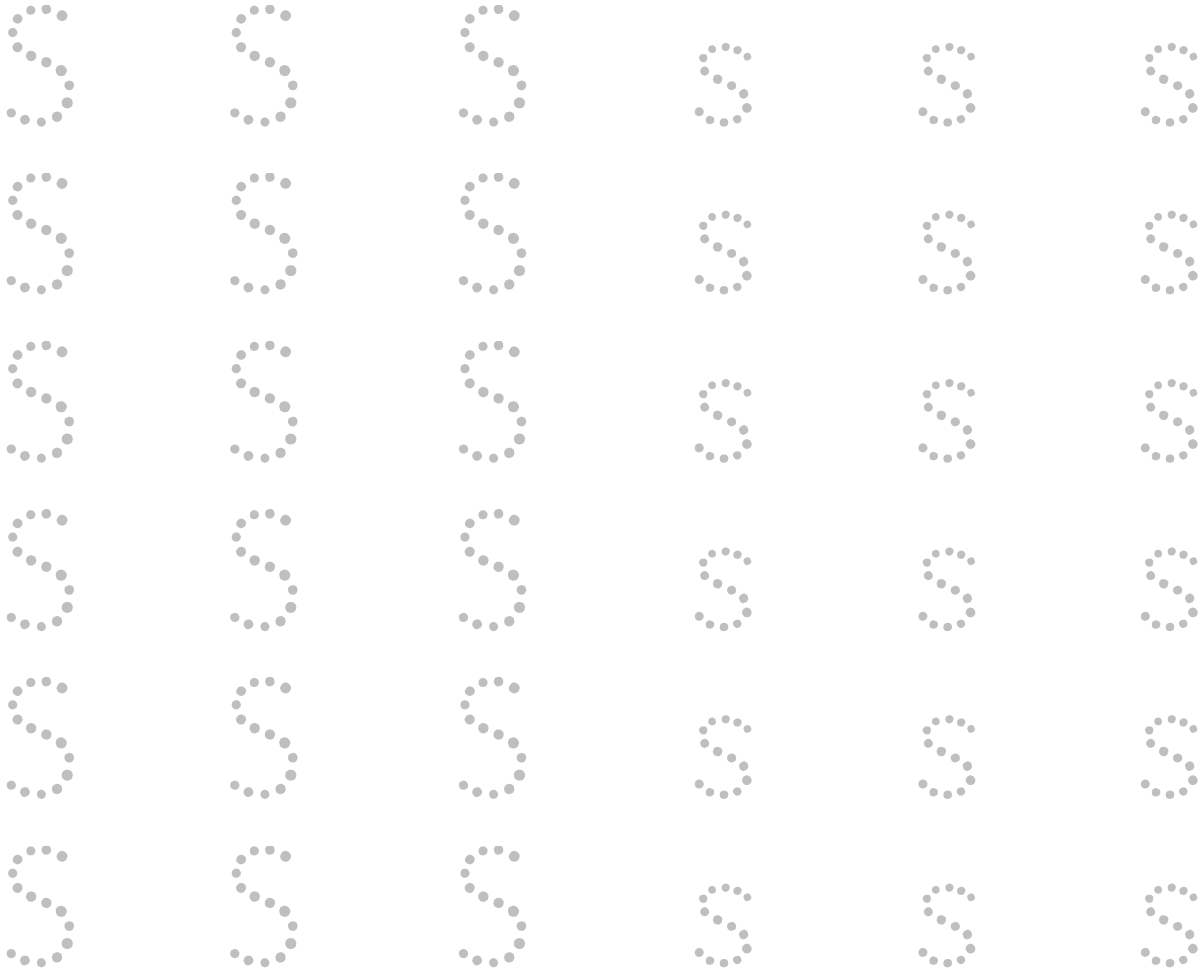
ALPHABET LETTERS



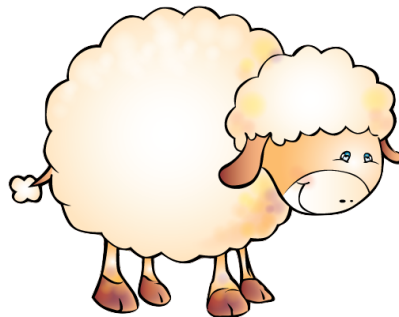
R is for ___ abbit



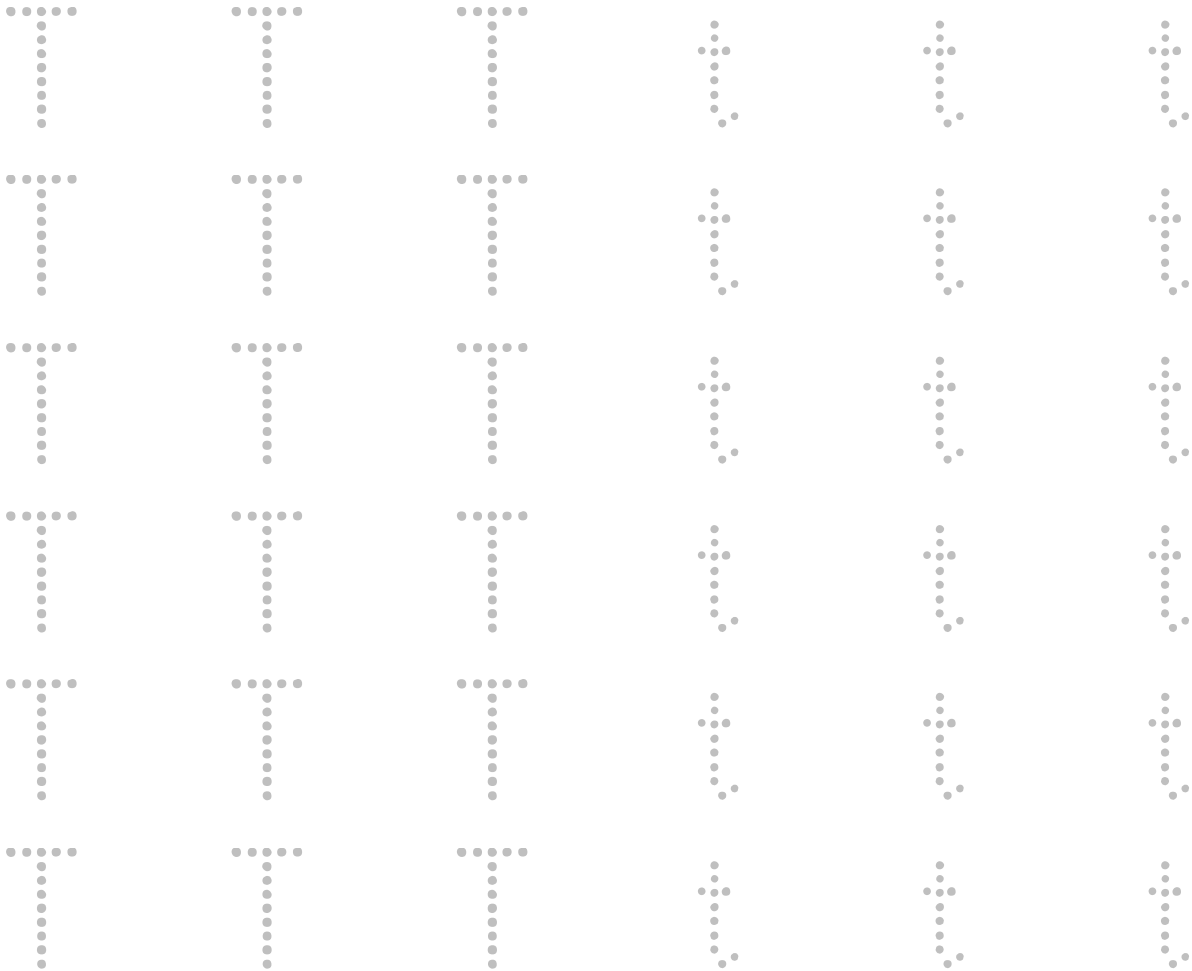
ALPHABET LETTERS



S is for ___ heep



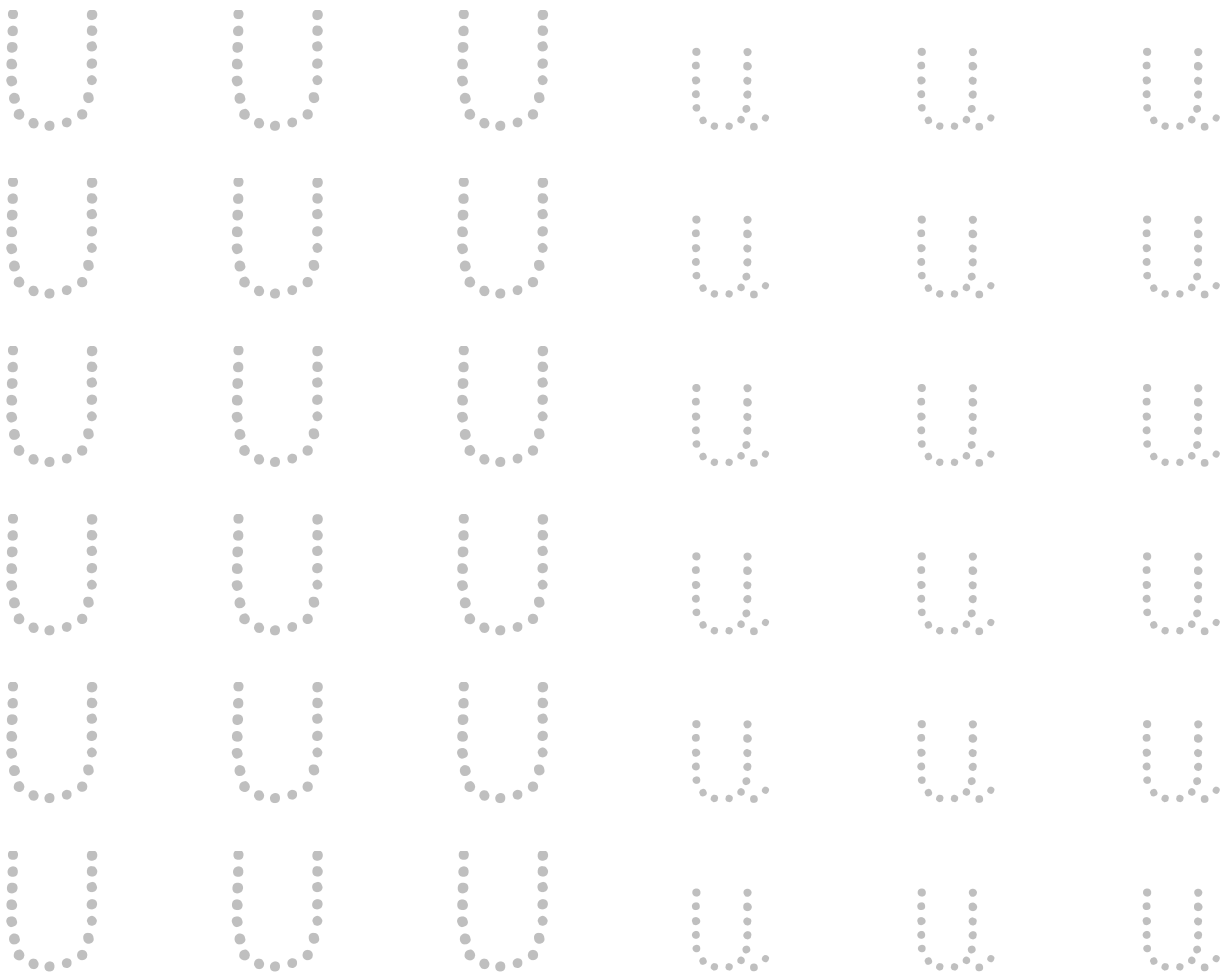
ALPHABET LETTERS



T is for ___ rain



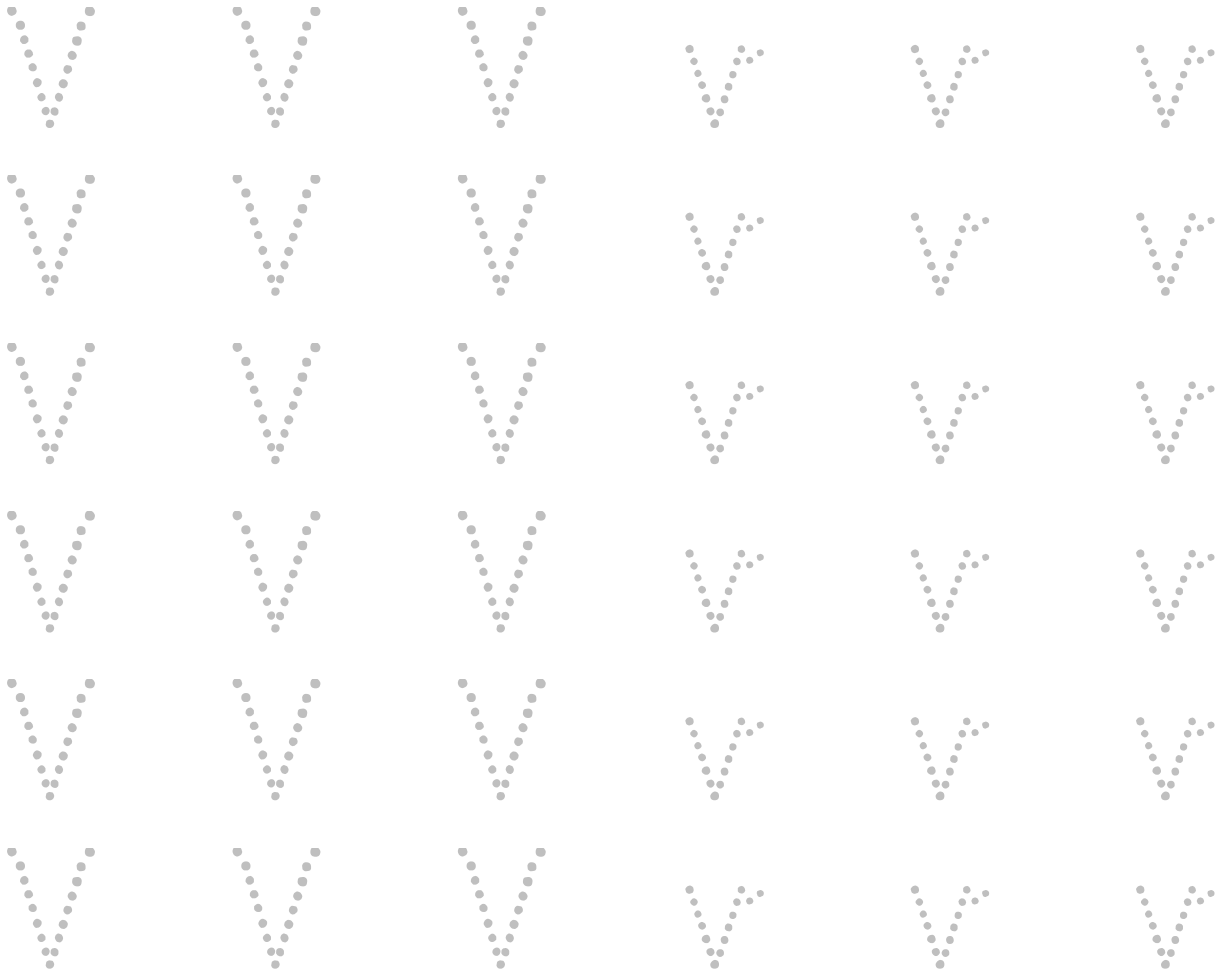
ALPHABET LETTERS



U is for ___ mbrella



ALPHABET LETTERS



V is for ___ ase



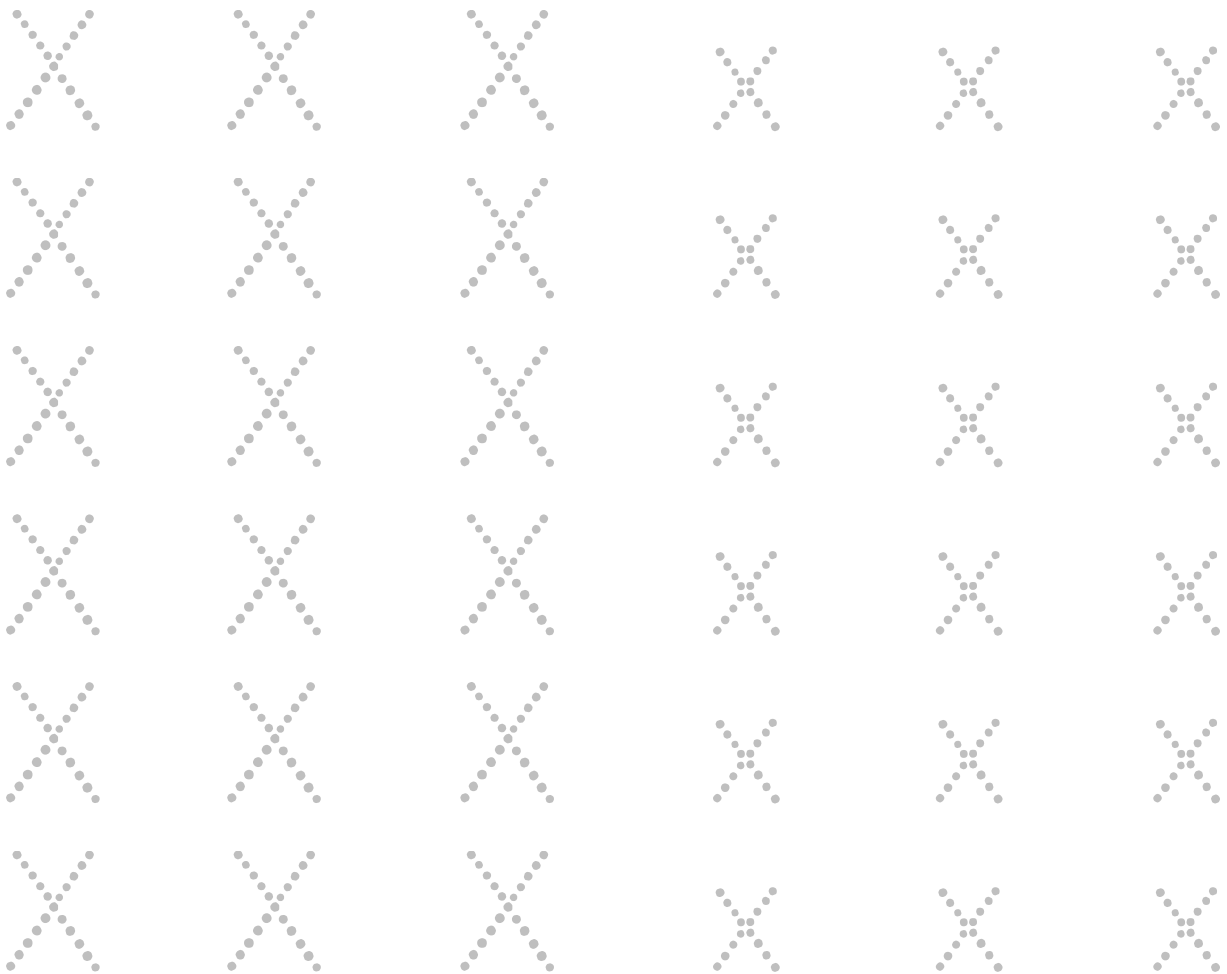
ALPHABET LETTERS



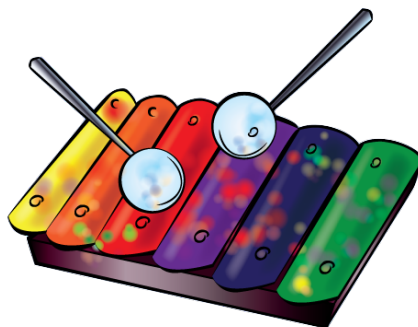
W is for ___ heel



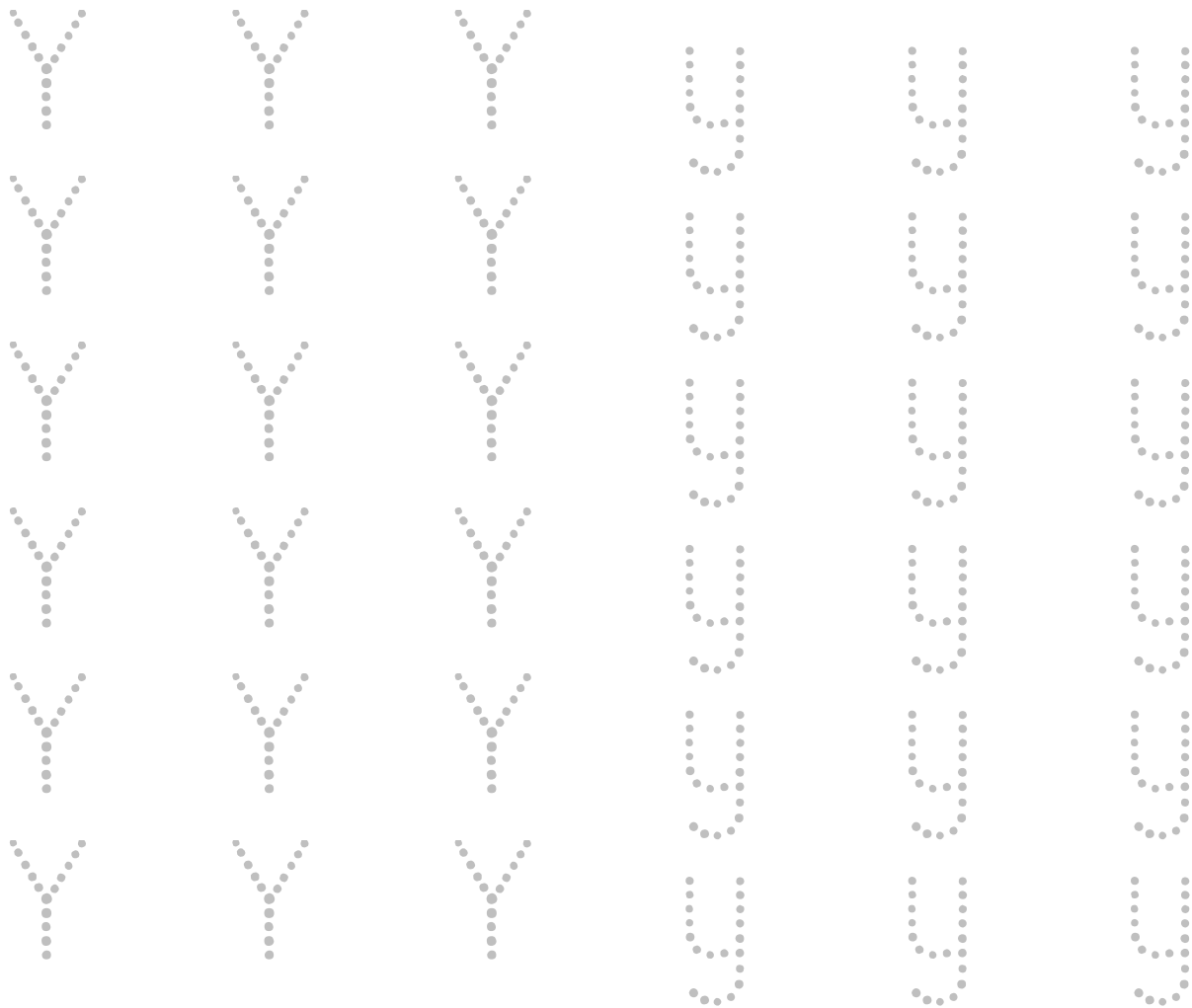
ALPHABET LETTERS



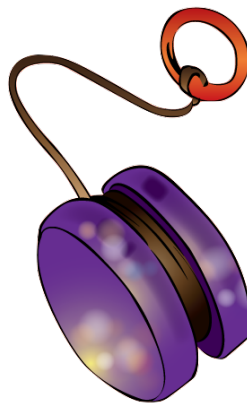
X is for ___ylophone



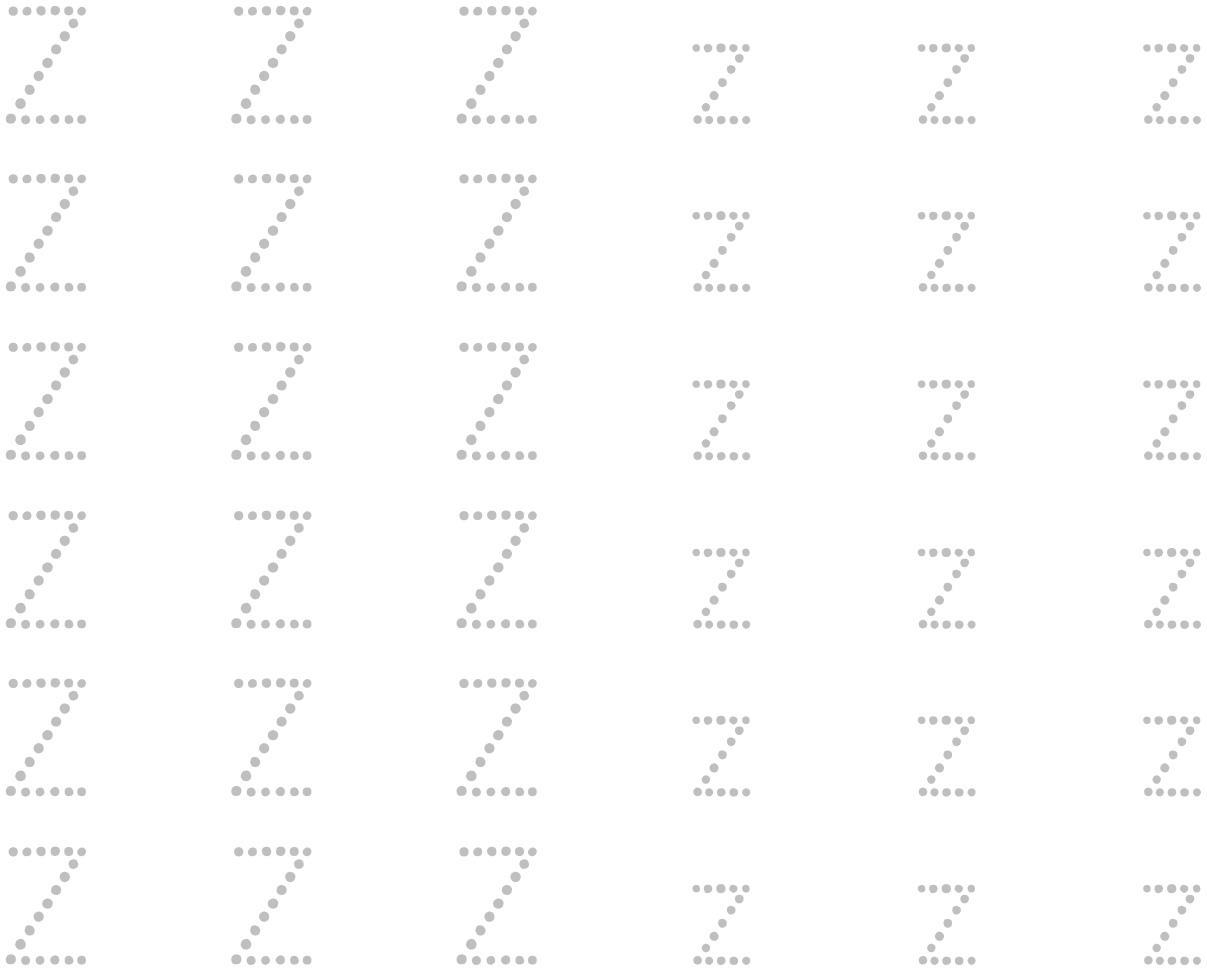
ALPHABET LETTERS



Y is for ___ o Yo



ALPHABET LETTERS



Z is for zebra



For more worksheets, visit www.akuandkamu.com

Aku & Kamu:
A global brand,
with a British heart

